

Access Statement For The Carhouse

Introduction

Roundhouse Barn Holidays provides five star, award winning self catering accommodation on the western side of The Roseland Peninsula. We are close to the King Harry Ferry and Turnaware Point and from the top of our winding driveway; guests can enjoy magnificent views of the Fal estuary from Falmouth to Mylor and onwards to Loe Beach.

We cater exclusively for adults. We do not take children under 14 or pets. The cottages, courtyard garden and gardens leading up the driveway to the car park are all no smoking areas.

We have three, one-bedroomed self-catering cottages (The Carhouse, Cockle Cottage and The Dairy). We also have a B&B Suite.

We have a well behaved dog called Barney. He tends to welcome everyone with a bark, but is very friendly. He is also likely to sit outside your front door in the morning to say hello - particularly if you are cooking sausages and bacon, but please resist the temptation to feed him. Please let us know if you are not keen on dogs and we will try and keep him away from you.

The Carhouse is on the ground floor of our main barn. It overlooks a beautiful courtyard garden. Here is a view of The Carhouse taken from our courtyard garden.



Pre-Arrival

You can contact us by telephone - 01872 580038, by text on 07977 262342 or by email at info@roundhousebarnholidays.co.uk. We can provide information in large print should you require it.

Our website has more details about the facilities in The Carthouse. Please contact us if you need any additional information.

We are 4½ miles from St Mawes which has a small number of shops/banks/ restaurants/pubs, etc and 3½ miles from our local pub (The Roseland Inn) at Philleigh. The Roseland Inn has a comprehensive lunchtime and evening dining menu.

There is limited public transport in the area – we have copies of the local bus timetables. If you plan to use public transport on your holiday, please contact us to discuss your plans.

Arrival & Car Parking Facilities

Our car park has 5 clearly demarcated car parking spaces at the top of our driveway. – see below.



Please always park within these spaces. If you have visitors coming to see you, please let us know so that we can make appropriate car parking provision for them. Our driveway is level, gravelled and lit at night.

Our car park is approx 55 metres from The Carthouse. The Car Park is also our fire assembly point.

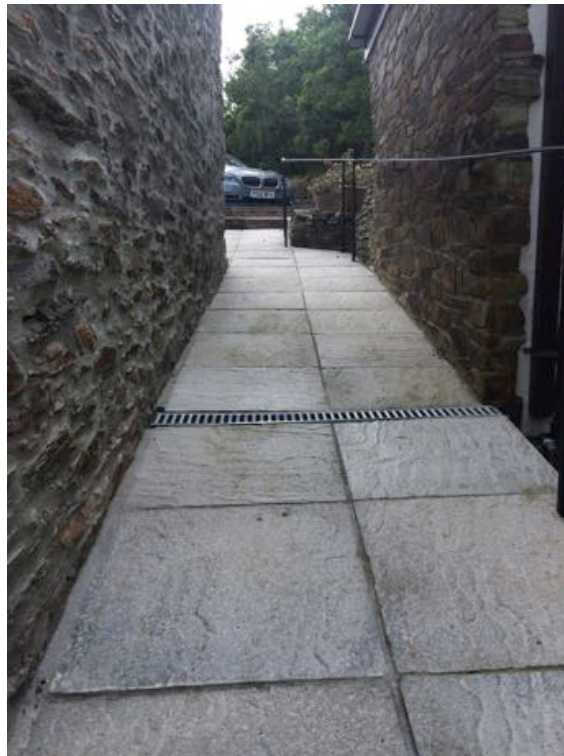
When you arrive, you can park at the bottom of our driveable to unload luggage. You can also park at the bottom of our drive to load up luggage when you check out.

If you have a mobility problem you can park nearer to the barns in our private parking area.

The Carhouse is accessed at the bottom of our driveway. There are two 18cm steps and a ramp with a hand rail to the left of the main barn – see photo below.



The ramp is approximately 6 metres long – see the photo below.



At night times the steps, ramp and pathways to The Carhouse are lit by external lights linked to motion sensitive PIRs. At the end of the ramp, turn right and follow the path to the end whereupon you reach the front door.

Outside The Carhouse, there is another motion sensitive PIR and external light above the front door.

Main Entrance The Carhouse

The Carhouse is on the ground floor of our main barn. The entrance is level from the Courtyard Garden – see the photo below.



The Carhouse comprises 5 rooms – a lounge, a hallway, a kitchen/diner, a bedroom and a bathroom.

Lounge

Guests enter The Carhouse directly in the lounge. It has an oak floor. The lounge has a sofa and two matching armchairs. It has a digital TV (with all the sky channels) and DVD player and remote controls for both. The lounge also has a Bose iPod docking station and separate radio/CD player. The room is well lit with both downlighters and two table lamps and 2 standard lamps. There is an electric, flame effect “log burner”, together with a selection of CDs, DVDs, board games and local magazines. There is a large rug on the oak floor in the middle of the room. We can remove this rug if guest would prefer it not to be present.

Hallway

The lounge opens on to a well lit oak-floored hallway. The hallway has doors off to the kitchen, bedroom and bathroom.

Kitchen

The kitchen has travertine stone flooring. It has standard height worktops and a range of wall and floor-mounted units. The sink has simple quarter-turn hot and cold taps. The kitchen comes fully equipped with an induction hob, a tower unit in to which a fan over and separate microwave are housed, a fridge, a freezer, a dishwasher and a microwave, together with a selection of white goods (eg kettle, toaster, food mixer). The cottage has cutlery and crockery for 6 place settings. There is a heat detector in the kitchen, together with a fire blanket and fire extinguisher. The room is well lit with downlighters and under unit lights.

Bedroom

The bedroom is accessed via the hallway. It has an oak floor. In the bedroom there is a 6' bed. The bed can be made up as two 3' twins instead. The room has two bed side tables, a dressing table, chest of drawers wardrobe and an armchair. The room is well lit with a combination of downlighters, two bedside lights and wall-mounted lights. There is also a free-view TV with a remote control. There are rugs on either side of the bed. These can be removed if you would prefer that they were not present.

Bathroom

The bathroom is opposite the bedroom. The room is well lit with downlighters. It has travertine floor and wall tiles and under-floor heating. There is a large bath with an over bath shower. The bath has a thermostatically controlled mixer valve and a single quarter turn tap. By turning the tap 90 degrees one way turns the shower on. Turning the tap 90 degrees the other way fills the bath. There is a reinforced shower screen around the bath. There is also a grab rail above the bath. There is a wall mounted WC, radiator and towel rail. The basin has a single lever tap that blends the hot and cold water feeds. Above the basin, there is a wall-mounted mirrored cabinet inside which is a pull cord for additional lighting and a shaver socket. A rubber mat that you can put down in the bath to stand on whilst you shower is also stored in the cabinet.

What else is included?

The Carhouse comes fully equipped with all bedding, towels, tea towels, Ecover cleaning products and dishwasher tablets, a vacuum cleaner, an ironing board, iron, clothes airer, laundry basket and peg bag. Each room has individual, thermostatically controlled radiators. Please either telephone or email us if you have any further questions. We also have two tumble driers in our garage by the car park, which you are welcome to use.

The Courtyard Garden

The Carhouse shares the courtyard garden. There is a garden bench, a patio table and two chairs. It shares a Webber BBQ with The Dairy.

There is a washing line in our courtyard garden that our self catering guests can use. It is located behind the screening at the far end of the courtyard garden. Clothes pegs are located in the housemaid's cupboard in the hallway.

The Front Garden

We also have a large, gently sloping (private) front garden which guests are welcome to explore. It is laid with grass and a selection of mature trees and shrubs. There is a small pond in the garden – see the photos below.



Contact Information

Address: Roundhouse Barns, St Just in Roseland, Truro, Cornwall, TR2 5JJ
Telephone: 01872 580038
Email: Info@roundhousebarnholidays.co.uk
Website: www.roundhousebarnholidays.co.uk
Fax: N/A
Minicom: N/A
Hours of operation: We are open all year round.
Check-in: 3:00pm – 7:00pm (earlier/later check-ins are only available by prior arrangement)
Checkout: By 10:00am
Emergency number: 01872 580038

We welcome your feedback to help us continuously improve. If you have any comments please complete the comments card in your room, telephone us on 01872 580038 or email Info@roundhousebarnholidays.co.uk.